

# GPROBE10

## COST-EFFECTIVE SOLUTION IP LAST MILE MONITORING



COMPACT DESIGN  
MULTIPLE STANDARDS  
PROFESSIONAL USE

### PROFESSIONAL MONITORING:

#### IP ANALYSIS

- Complete analysis of the IP signals
- Maximum and minimum arrival interval between packets in one second
- IP and UDP payload bitrate
- Media loss rate and loss IP frame
- Multiple IP flows in parallel (up to 64)
- IP Jitter
- UDP and RTP modes (auto)

#### AND MUCH MORE...

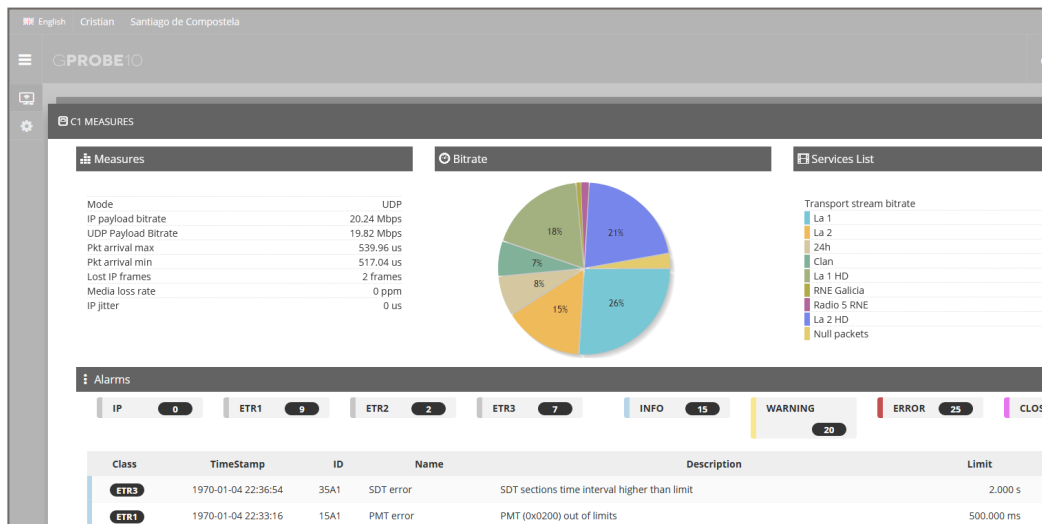
- Alarms: level 1 and level 2 priority errors
- Configurable type of alarm (Info, Warning, Error)
- HTML5 control application
- SNMP control
- Ethernet connectivity
- Internal storage: 20MB
- External storage: USB port

### OPTIONAL FEATURES

- ✓ Additional IP flows in parallel  
(16 additional flows each license)
- ✓ Level 3 priority errors alarms
- ✓ 1 x RF 75Ω  
(DVB-T/T2, ISDB-T/Tb, QAM or DVB-S/S2)
- ✓ Power supply -48VDC
- ✓ Rack adapter

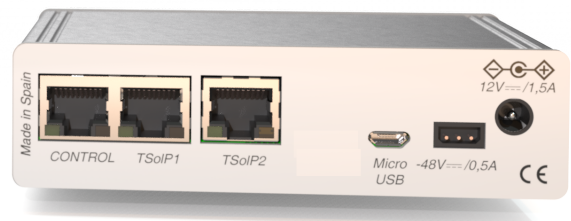
# GPROBE10

## MANAGEMENT SYSTEM



ALL IN ONE  
Measurements  
Services  
Bitrates  
Alarms  
at a glance

## SPECIFICATIONS



### Mechanical characteristics

Weight: 495g (without 1RU adapter)  
Size: 120mmW x 145mmD x 450mmH  
(without RU adapter)  
Working temperature: -5°C to 45°C  
Storage temperature: -20°C to 70°C  
Humidity: 5% to 95% (non condensing)  
Rack adapter 1U (optional)

### Storage

Internal storage: 20MB  
External storage: USB port

### Inputs

IP: 2 x GE RJ45 (TSolP) (optional)  
RF: 1 x RF 75Ω (optional)

### IP Measurements

Max. arrival interval between packets  
Min. arrival interval between packets  
IP payload bitrate  
UDP payload bitrate  
Media loss rate  
Loss IP frame  
IP Jitter  
UDP and RTP mode (auto)

### RF Measurements

QAM: Power, C/N, MER, BER  
DVB-T/T2: Power, C/N, MER, CBER, VBER  
ISDB-T/Tb: Power, C/N, MER, BER  
DVB-S: Power, C/N, MER, CBER, VBER  
DVB-S2: Power, LM, MER, LDPCBER, BCHBER

### Alarms

Level1 and level2 priority errors  
Level3 priority errors (optional)

### Electrical Characteristics

100-240 VAC  
50-60 Hz  
1.4A  
-48VDC (optional)

### Interfaces

1 x Ethernet RJ45 (control)  
Web (HTML5)  
IP: 2 x Ethernet RJ45 (TSolP) (optional)  
SNMP  
USB