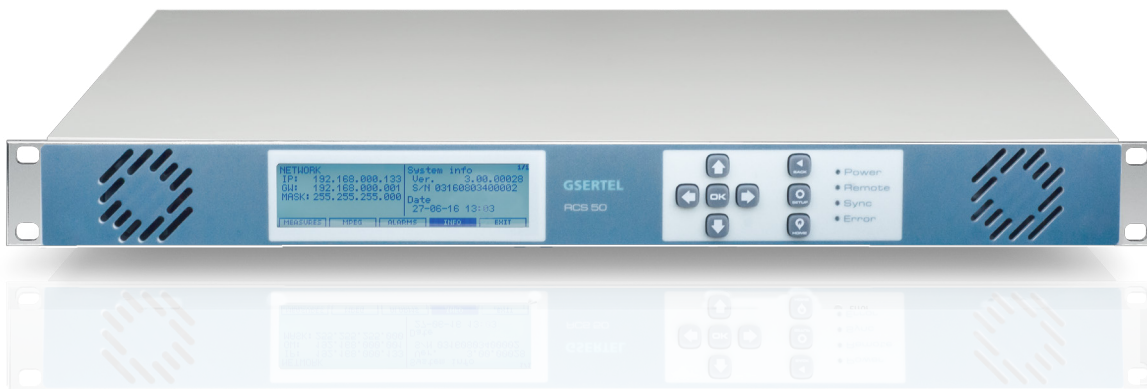


RCS50

DVB-T

DVB-T2

A COST-EFFECTIVE SOLUTION TO MONITOR DVB-T/T2 NETWORKS



PROFESSIONAL MONITORING:

RF ANALYSIS

- Real Time 20 MHz spectrum
- Signal quality measurements: Power, C/N, BER, MER, Echoes
- Universal Auto Lock
- Alarm log (real time) and representation (time evolution)

TS ANALYSIS

- Bitrate
- Table repetition and quality analysis
- Services treeview
- Alarm log analysis
- Treeview

AND MUCH MORE...

- 1 RF input, 1 ASI output
- Ethernet connectivity
- HTML5 control application
- SNMP v2.0 alarms

OPTIONAL FEATURES

- ✓ All in One feature
(with thumbnails)
- ✓ RF polling
(and historical polling)
- ✓ ASI input
- ✓ Level 1 and 2 priority errors
- ✓ Extended Analysis
(Level 3 priority errors)
- ✓ TS Recording
- ✓ Live Streaming
- ✓ PID monitoring
- ✓ Bitrate monitoring

GSETEL

RCS50

COST-EFFECTIVE SOLUTION TO MONITOR
DVB-T/T2 NETWORKS

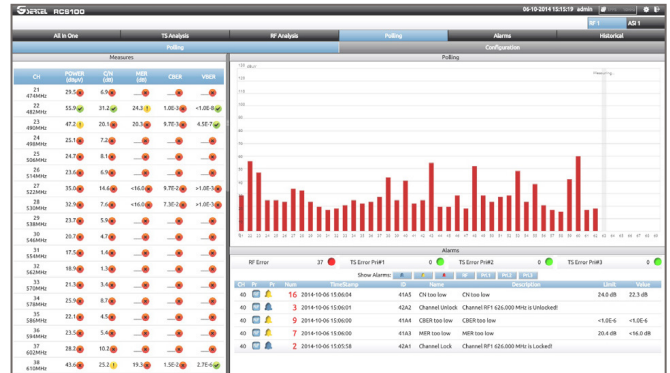


MANAGEMENT SYSTEM



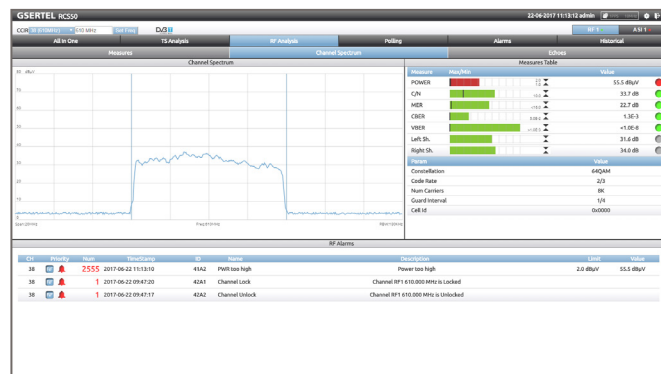
ALL IN ONE (OPT.)

Shows an overview of the channel status on one screen. It shows spectrum, services, measurements, alarms, Pids. All integrated in a single view for quick analysis



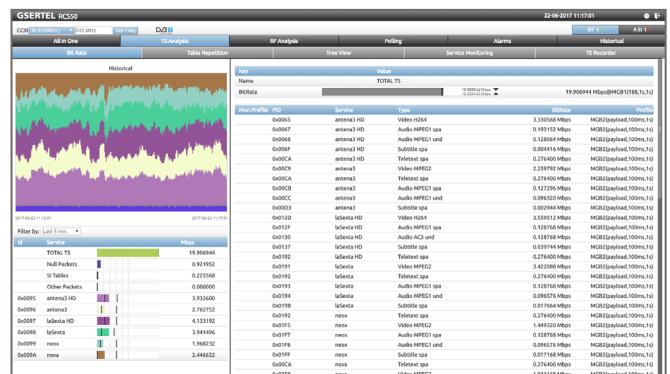
POLLING (OPT.)

Continuous measuring of an user-defined number of channels



CHANNEL SPECTRUM

Represents realtime 20MHz spectrum of the monitored channel with detailed measurements



BITRATE

Historical services bitrate graphical representation and realtime bitrate

SPECIFICATIONS

Standards

ETSI EN 300 744 (DVB-T)
ETSI EN 302 755 (DVB-T2)

Inputs

RF: 1 x 50 Ω N connector
RF Input Frequency:
47MHz to 1GHz
TS: 1 x ASI IN BNC 75Ω. (opt.)

Outputs

TS: 1 x ASI OUT BNC 75Ω

RF Measurements

20 MHz Spectrum
Power, C/N
MER, CBER, VBER
Link Margin, BCHBER, LDPCBER
Echoes

MPEG Measuremenst

Level 1,2 y 3 priority errors. (opt.) TR 101 290
Services bitrate
Alarms log analysis

Mechanical characteristics

1U 19" rackable unit
Size: 482mm W x 348mm D x 41mm H
Working temperature: 0 a 40 °C
Storage temperature.: 0 a 50 °C

Electrical Characteristics

Input 100 - 240 VAC 50-60Hz 1.4A

Interfaces

1 x USB 2.0
1 x Ethernet RJ45
LCD Graphic display

Control protocols

HTML and SNMP