

# TRITON<sup>ONS</sup>



## Robustness and reliability in the hardest environments

### Description

- Service pedestal with advanced and intuitive control system
- Client-Server working mode
- Pre-paid and post-paid mode

### User Interface

- High contrast 4x20 OLED display. It shows the connected users, the status of the outlets, the electricity and water consumption, and the remaining balances.
- Touch proximity sensor for outlet and maximum amount selection (indicative LED)
- RFID proximity card reader for user identification

### Lighting

- Efficient LED lighting
- Automatic working mode or programmed time schedule
- Manual switching for maintenance

### Housing

- 1.5mm thick AISI 316L stainless steel enclosure with anti-corrosive treatment
- High protection against mechanical impact and vandalism IK10
- Removable lateral covers with hidden locking system
- Fast exchange IP55 electrical boxes to facilitate maintenance
- 4 x internal anchors for fixing to the jetty
- Thermal-shaped PVC roof
- Inner shelf for isolation of the hydrant zone
- External dimensions (L x W x H): 400x360x1600mm



# Smart Service Pedestals

## Electrical Outputs

- Single / Three phase current outputs from 16A – 250A
- CETAC, Marechal sockets.
- Individual energy meter for each output. (MID option)
- Remote contactor switching technology (ON/OFF)
- Magneto-thermal and differential individual protection for each output
- Anti-theft system for electricity, with unplug detection and automatic switching off



## Hydrant Outputs

- Water outlets from 1/2" to 2"
- Individual water meter for each output.(MID option)
- Individual electro-valve for each output (ON/OFF)
- Water connection with shut-off ballvalve



## Communications

- Multiprotocol central server communications: Ethernet / Wi-Fi
- Integrated Ethernet switching
- Wireless access point integrated at each pedestal (optional)
- Remote firmware update

## Control System

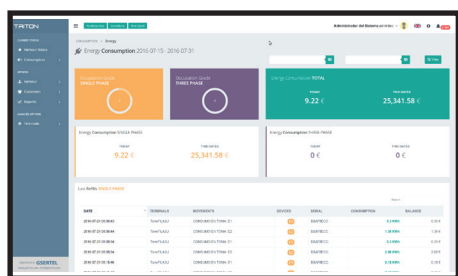
- New generation digital integrated circuitry
- ESD and optical protection against electrical discharges
- Anti-tampering system with individual plug detectors and automatic switching off and user logout
- Automatic reconnection of outputs when a brownout occurs. The system keeps open devices, logged users and balances.
- Customer login using encrypted RFID token or Smartphone/Tablet (option).
- Remote management server for configuration, control and firmware update
- Automatic language switching



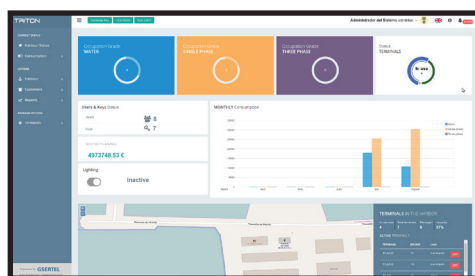
## Management Application

- Real time monitoring of harbour supplies
- Interactive map for pedestals and supplies management
- User authorizations and cancellations
- Recharging of prepaid cards, balance and credit management
- Activity, consumption and alarm logging.
- Automatic billing
- Activity reports and historical

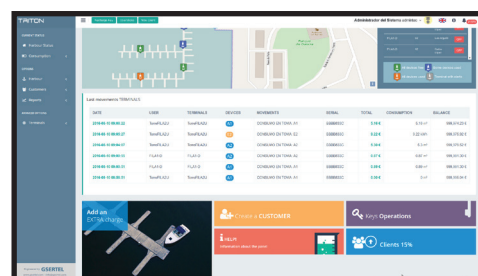
## Management Application SGSP



Real-time consumption monitoring



Historical consumptions



Interactive port plan