

TRITON CIES



Elegant design with the highest scalability

Description

- Service pedestal with advanced and intuitive control system
- Client-Server working mode
- Pre-paid and post-paid mode



User Interface

- High contrast 4x20 OLED display. It shows the connected users, the status of the outlets (on/off), the electricity and water consumption, and the remaining balances
- Touch proximity sensor for outlet and maximum amount selection (indicative LED)

Lighting

- Efficient LED lighting
- Automatic working mode or programmed time schedule
- Manual switching for maintenance

Housing

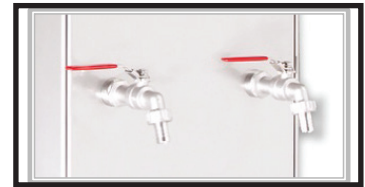
- 3mm marine grade anodized aluminium
- Insulated zones for electricity and water elements
- Resistant to marina environment, with stainless screws and accessories
- Stainless water pipes and taps with rotary shut-off ballvalve
- IP66 sealed and IK10 high protection against mechanical impact and vandalism
- Pedestal customization: marina logo, paint color, and optional multiple services according to customer needs
- External dimensions (LxWxH): 240x180x1000mm



Smart Service Pedestals

Electrical Outputs

- Single / Three phase current outputs from 16A – 250A
- CETAC, Marechal sockets
- Individual energy meter for each output. (MID option)
- Contactor switching technology (ON/OFF)
- Magneto-thermal and differential individual protection for each output
- Anti-theft system for electricity, with unplug detection and automatic switching off



Hydrant Outputs

- Water outlets from 1/2" to 2"
- Individual water meter for each output.(MID option)
- Individual electro-valve for each output (ON/OFF)
- Water connection with shut-off ballvalve

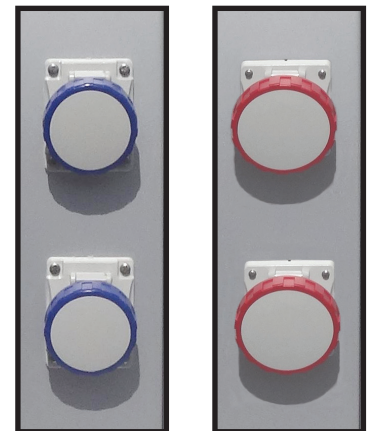


Communications

- Multiprotocol central server communications: Ethernet / Wi-Fi
- Integrated Ethernet switching
- Wireless access point integrated at each pedestal (optional)
- Remote firmware update

Control System

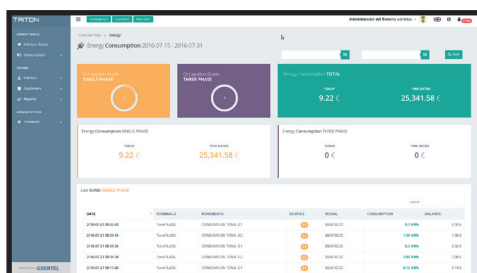
- New generation digital integrated circuitry
- ESD and optical protection against electrical discharges
- Anti-tampering system with individual plug detectors and automatic switching off and user logout
- Automatic reconnection of outputs when a brownout occurs. The system keeps open devices, logged users and balances.
- Customer login using encrypted RFID token or Smartphone/Tablet (option)
- Remote management server for configuration, control and firmware update
- Automatic language switching



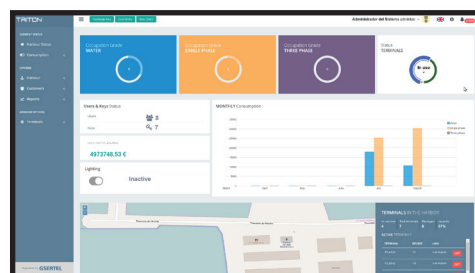
Management Application

- Real time monitoring of harbour supplies
- Interactive map for pedestals and supplies management
- User authorizations and cancellations
- Recharging of prepaid cards, balance and credit management
- Activity, consumption and alarm logging
- Automatic billing
- Activity reports and historical

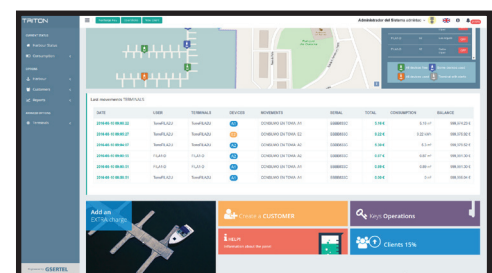
Management Application SGSP



Real-time consumption monitoring



Historical consumptions



Interactive port plan