

RCS400



HIGHEST PERFORMANCE WITH AN INTUITIVE MANAGEMENT
ADVANCED REAL TIME MONITORING OF 4 MUX OVER IP/ASI AND RF INPUTS



PROFESSIONAL MONITORING:

RF ANALYSIS

- Real Time spectrum
- Two ways of operation: channel analysis or multiple channel polling
- Signal quality measurements: Power, C/N, MER, BER
- Alarm log (real time) and representation (time evolution)

TS ANALYSIS

- Bitrate analysis
- Level1, 2 priority error analysis as TR 101 290 recommendations
- Table repetition and quality analysis
- Services treeview

AND MUCH MORE...

- Video thumbnails
- Local display of measurements and alarms
- 4 RF input, 4 ASI input, 4 ASI output, and HDMI audio/video output
- Ethernet connectivity
- HTML5 control application
- SNMP v2.0 alarms

OPTIONAL FEATURES

- ✓ IP (TSolP) INPUT
- ✓ Redundant IP INPUT
- ✓ Additional DVB standard
- ✓ Full historical measurements with alarms analysis
- ✓ Advanced Measurements
(Full Spectrum, Constellation)
- ✓ Extended TS Analysis
(third priority errors, PCR Jitter)
- ✓ TS Recording
- ✓ Live Streaming

GSETEL

RCS400

ADVANCED REMOTE MONITORING SYSTEM
FOR DVB-C

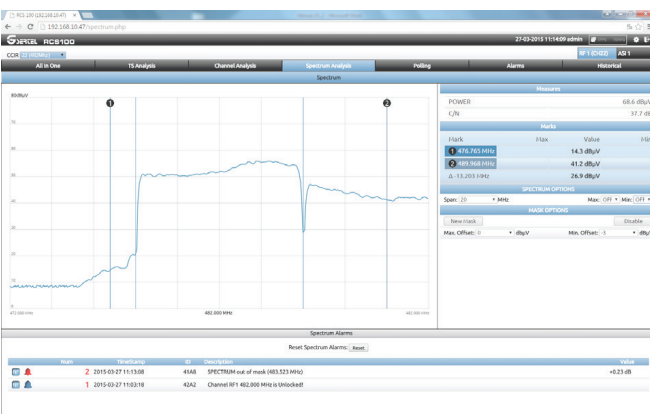


MANAGEMENT SYSTEM



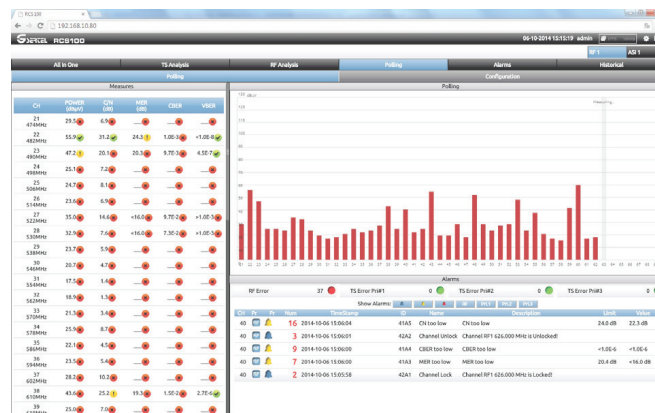
ALL IN ONE

Shows an overview of the channel status on one screen. It shows spectrum, services, measurements, alarms, Pids. All integrated in a single view for quick analysis



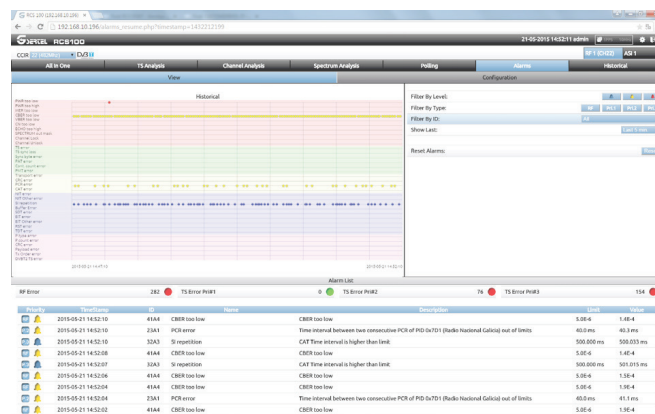
FULL SPECTRUM (OPT.)

Represents realtime spectrum of the monitored channel with detailed measurements, mask, max. and min. hold features



POLLING

Continuous measuring of an user-defined number of channels



ALARMS

Represents the alarms counter during an user-selected period of time

SPECIFICATIONS

Standards

ETSI TR 101 290
ETSI EN 300 429 (DVB-C)

Inputs

RF: 4 x 75 Ω N connector
RF Input Frequency:
47MHz to 1GHz
10MHz BNC 50 Ω
TS: 4 x ASI IN BNC 75Ω
IP: 2 x GE RJ45 (TSolP) (opt.)

Outputs

TS: 4x ASI OUT BNC 75Ω
A/V: 1 x HDMI

RF Measurements

20 MHz Spectrum
Power, C/N
MER
BER (Annex A/C)
Pre-BER (Annex B) and Post-BER (Annex B)
Constellation (opt.)
Full Spectrum (opt.)

MPEG Measurement

Level 1,2 y 3 priority errors (level 3 opt.)
Alarms log analysis
PCR Jitter (opt.)

IP flow measurements (opt.)

Packet arrival max. & min
IP & UDP payload bitrate
Media loss rate
Loss IP frames
Corrected IP frames

Mechanical characteristics

1U 19" rackable unit
Size: 482mm W x 348mm D x 41mm H
Working temperature: 0 a 40 °C
Storage temperature.: 0 a 50 °C

Electrical Characteristics

Input 100 - 240 VAC 50-60Hz 1.4A

Interfaces

1 x USB 2.0
1 x Ethernet RJ45
LCD Graphic display
HDMI

Control protocols

HTML and SNMP